

Rough-In Parts

Valve Rough-In Kit #517HH5

(Backing plate, mud cover, pipe fitting, retainer band, screws)

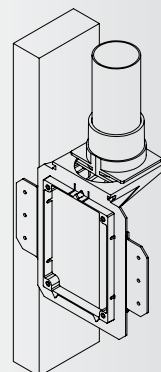


HAH Elbows

90° #502HH
45° #504HH
22.5° #506HH



Note: Use regular central vac pipe. Limit each valve to four HAH 90's, and no Tees or Wyes before end of nestled hose.



Finish Parts

Valve Trim Kits (Hose box, door, screws)

HS5000 Series
White #653HHW5
Almond #653HHA5

HS4000 Series
White #653HHW



Rapidflex Hose

30ft #302HHGK
40ft #304HHGK
50ft #305HHGK
60ft #306HHGK

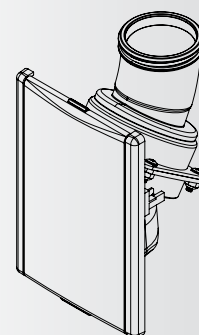


Hose w/ Sock

30ft #302HHK
40ft #303HHK
50ft #304HHK
60ft #305HHK



Note: After drywall, slide valve into backing plate. Seal is automatically created. Vacuum pulls hose through valve.



Non Remote Frequency (RF) Handle Options

Handle w/o RF #302GHH

Connect HAH hose to handle with secure friction fit connection.



Basic Handle #302HBBH

Use instead of or in lieu of a handle.



Hose to Tool Adaptor #302HHSA

Use instead of or in lieu of a handle.



Note: Pull red lever inside HAH valve to start and stop suction when using one of these handles.

Remote Frequency (RF) Handle Options

RF 915 Handle Kit #302GHHRFK

(Handle with RF inside & RF receiver that connects to power unit)



RF 915 Handle #302GHHRF

(Handle with RF inside)
One or multiple handles can be used in a home using one RF receiver.



Note: Conveniently activate power unit suction from the hose handle using RF technology.

Standard Accessory Kit Options

TurboCat Deluxe Kit (without hose) #416DBLK

Also includes wire hanger and mesh bag.



Zoom Deluxe Kit (without hose) #416ZBLK

Also includes wire hanger and mesh bag.



Note: Air driven kits "without hoses" are needed for the retractable HAH system. Electric heads are not compatible.

TIPS:

Install electric and HAH valves in the same home for ultimate cleaning and convenience. HAH in hard-floor areas and electric in carpeted areas.

Allow HAH hose to relax and warm to room temperature before installation.

Retrofit HAH into existing homes and homes that already have a central vacuum.

WARRANTY:

3-Year Limited Warranty on hose, fittings, and valves.

Premium Accessory Kit Options

TurboCat Premium Kit (without hose) #416PBLK

Includes wire hanger and mesh bag.



Zoom Premium Kit (without hose) #416PZBLK

Includes wire hanger and mesh bag.



VACUUM UNIT SUGGESTIONS:

1-3 HAH VALVES*
SilentMaster S560r
Modern Day M465h, M575h
Flo-Master F600t
AirMaster A575h

1-6 HAH VALVES*
Modern Day M615h, M715h
Flo-Master F650t, F700t
AirMaster A650t, A700t

1-9 HAH VALVES*
SilentMaster S900r
Modern Day M965h

One 40ft HAH valve can cover up to 2000 sq. ft.

*Each application varies based on hose length, altitude, and size of system.



Stand-alone mounts in a variety of ways and places.

Special Kits

HAH Garage Kit 30ft #416GHH30 40ft #416GHH40

Use with HAH valve, non RF Basic Handle #302HHBH
30ft Hose Alone #302HHGK
40ft Hose Alone #304HHGK

Note: Garage Kit Hose does not use a hose sock.



Hard Floor Kit #410A5BL

Includes mesh bag.



Parts



RF Repeater #145VRP

For large homes with signal issues.



Sock Replacement 30ft #370HH30 40ft #370HH40 50ft #370HH50 60ft #370HH60



Door Replacement HS3000 + HS4000(L) White #653HHWD(L) Almond #653HHAD(L) HS3000 Series Black #653HHBD



4000 Series Backing Plate #517HHF Plaster Guard #519HH



4000 Series Rough-in Pipe Adapter #517HHPA



Original Valve Conversion White #517HHWCK Almond #517HHACK



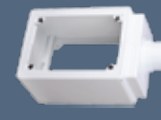
Handle Adapter #302GHHA Threaded Adapter #302HHTA



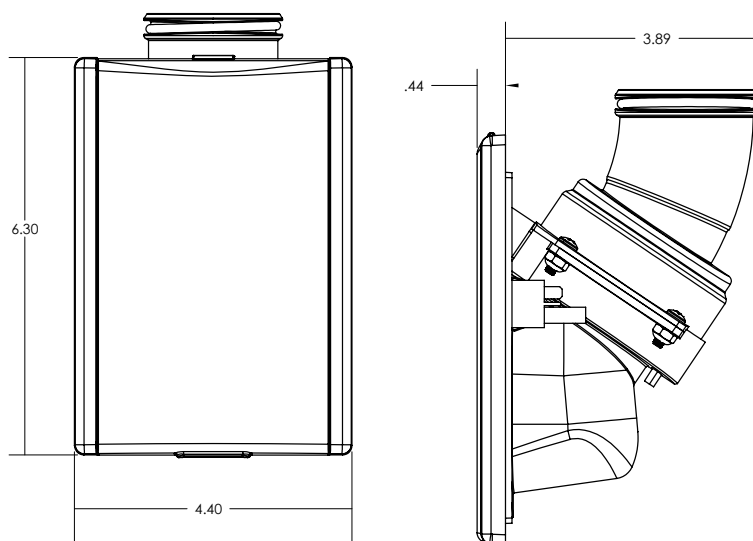
4000 Series Valve Sleeve Kit #653HHTRK Trim Cover #610HHW



Switch Kit #653HHSK Clear 90° #502HHC



4000 Series Stand-Alone Mounting Box #515HH Outside wall or inside cabinet.



Pricing Breakdown*

ESTIMATE A: ONE INLET, NO RF, BASIC KIT

Rough-In & Finish**	\$800
Non RF Handle/Basic Kit	\$240
Total (excluding power unit)	\$1040

ESTIMATE B: TWO INLETS, RF, PREMIUM KIT

Rough-In & Finish*	\$1600
RF Handle/Prem. Kit	\$500
Total (excluding power unit)	\$2100

*Price includes estimated labor costs. Installation may take 1 - 2 extra hours per HAH valve in both new construction and existing homes.

**Based on 40' Hose, four 90° HAH elbows per valve. Existing home installation usually costs more.